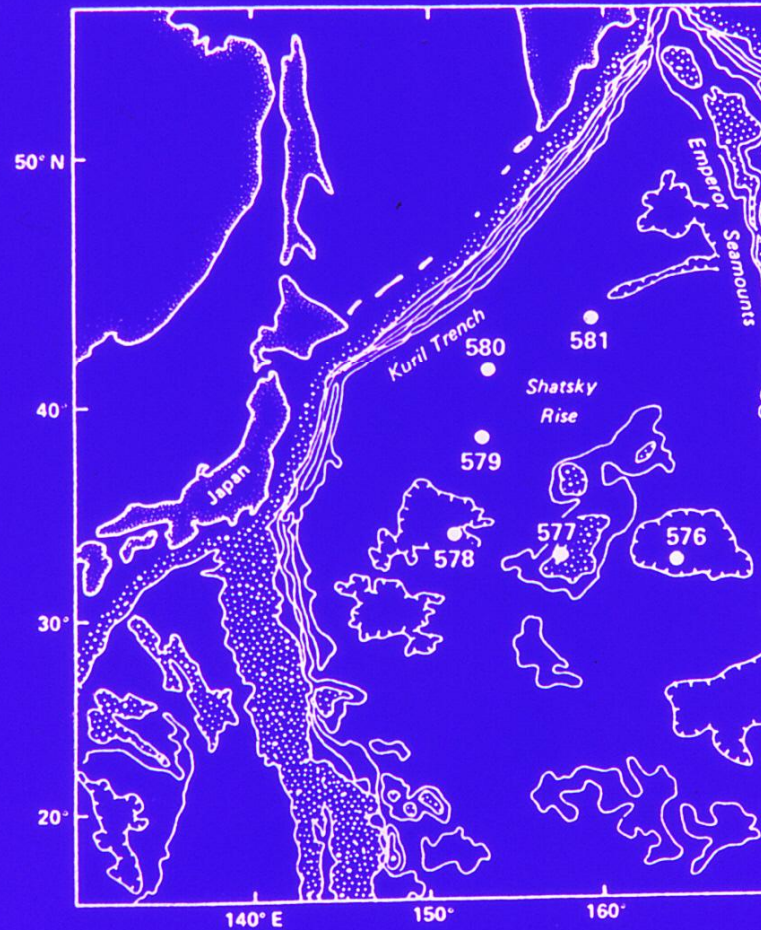
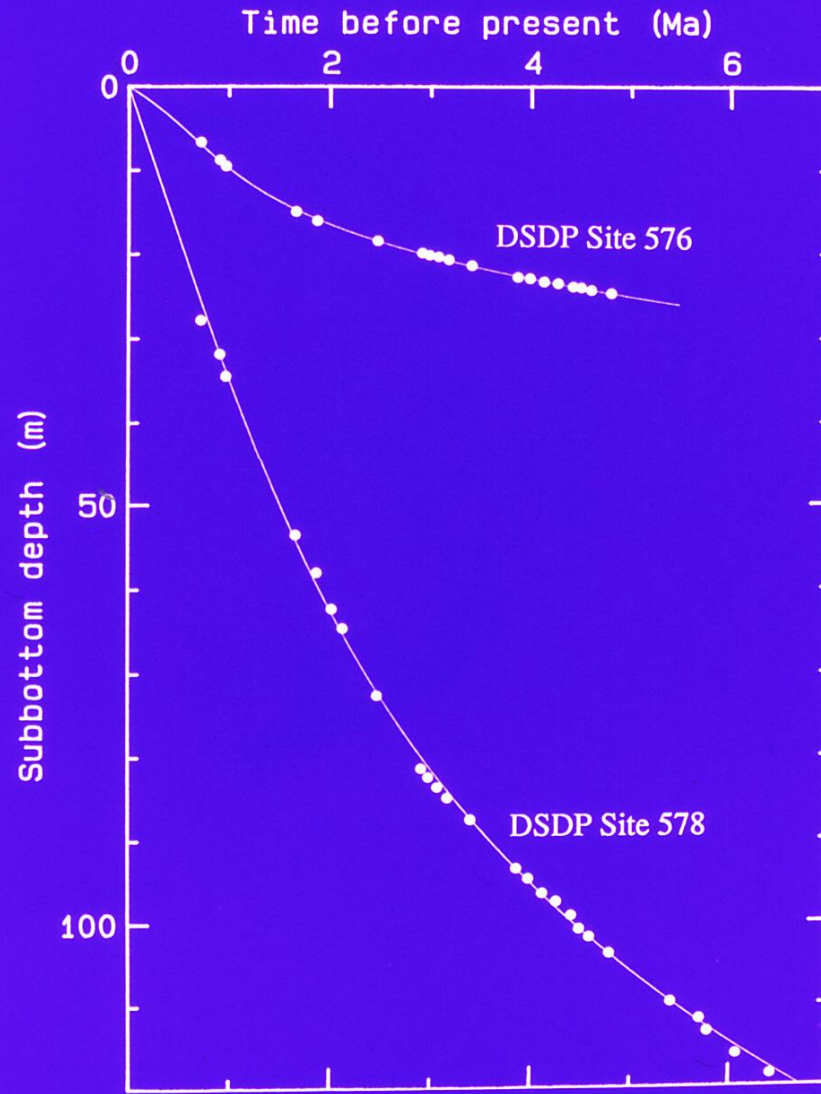


Arason, P. and S. Levi (1986). Inclination shallowing recorded in some deep sea sediments, *EOS Transactions AGU*, **67**, p. 916, Oral presentation GP12A-08, American Geophysical Union, Fall Meeting, San Francisco, California, 8-12 December 1986.

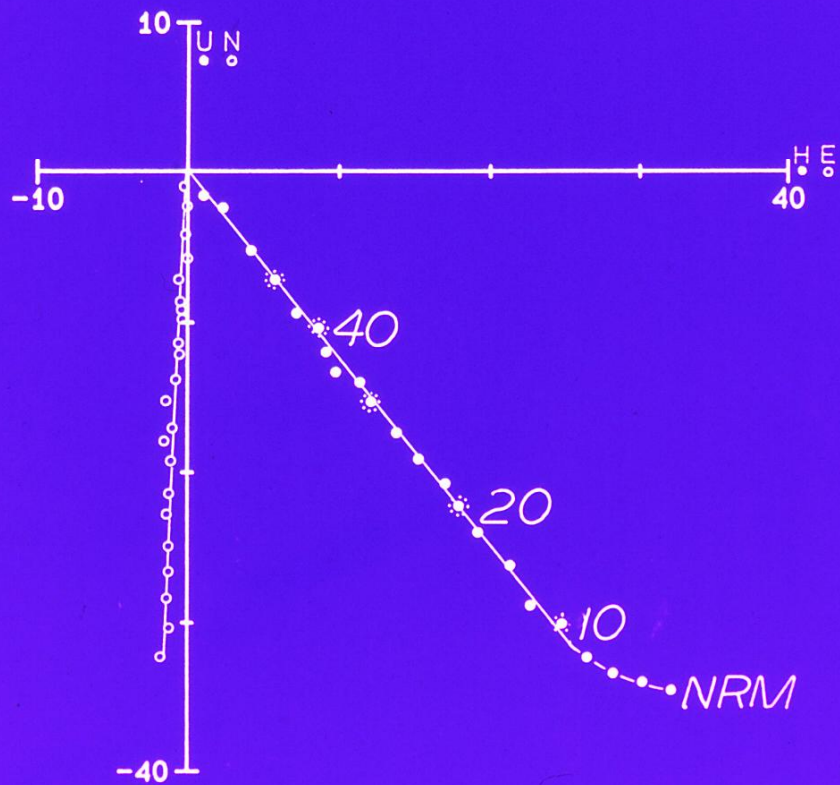
Location map of DSDP Leg 86



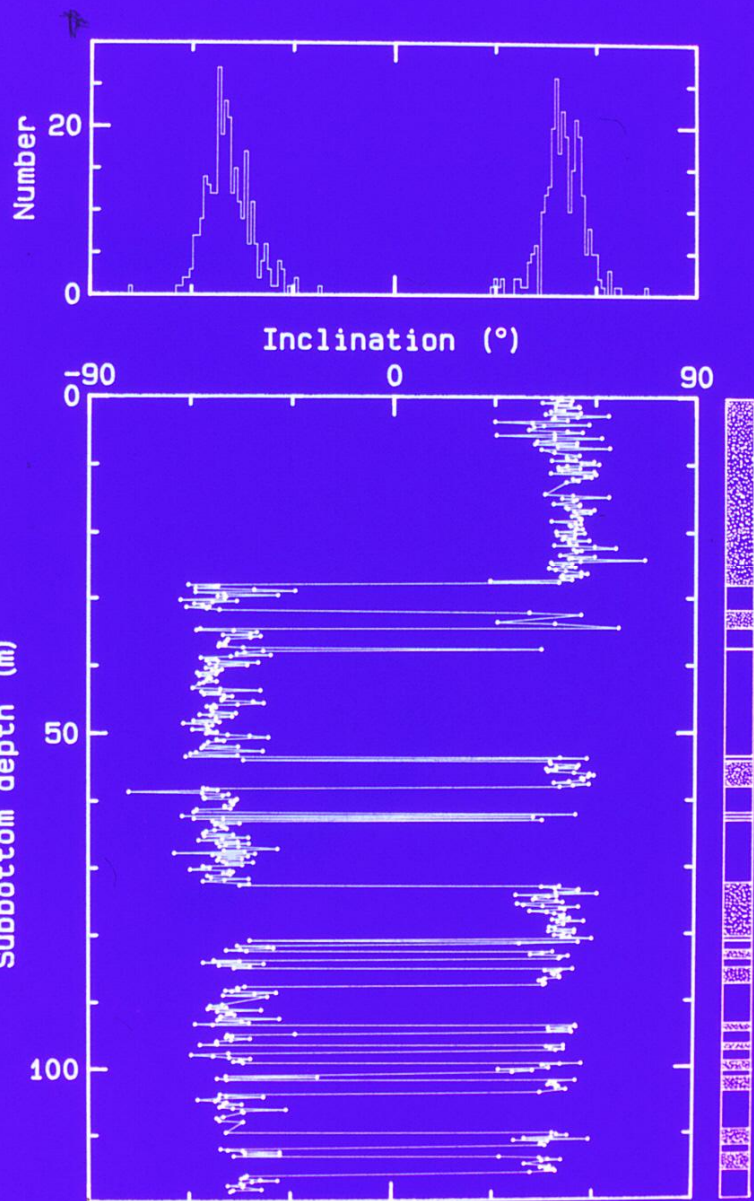
DSDP Sites 576 and 578



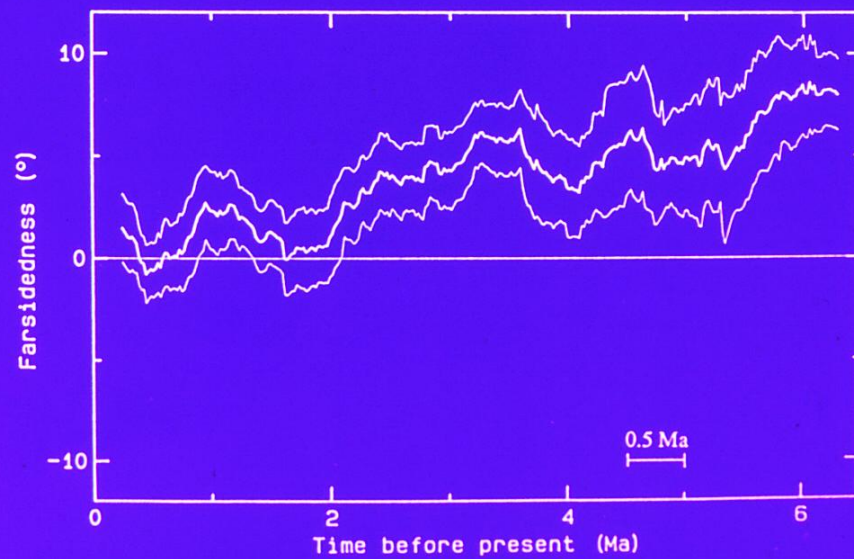
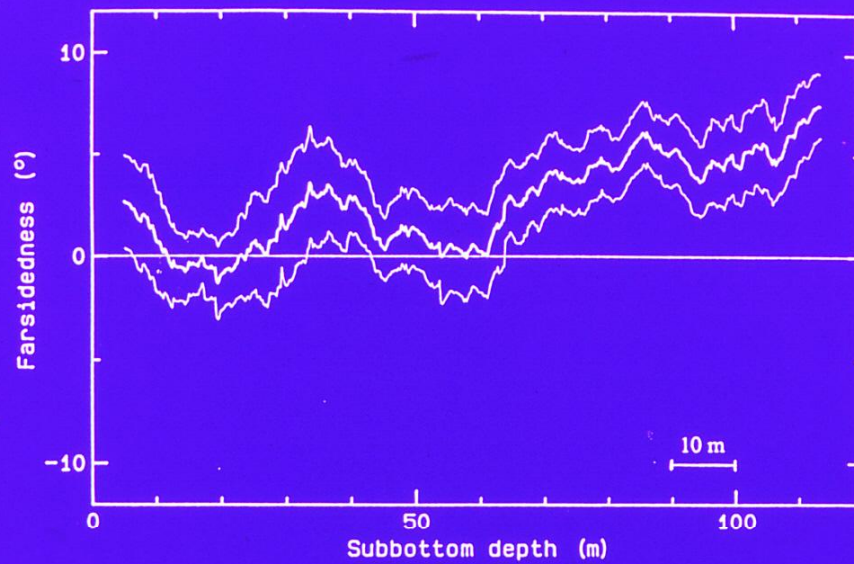
DSDP Hole 578
Sample #946 - 9.10 m subbottom depth



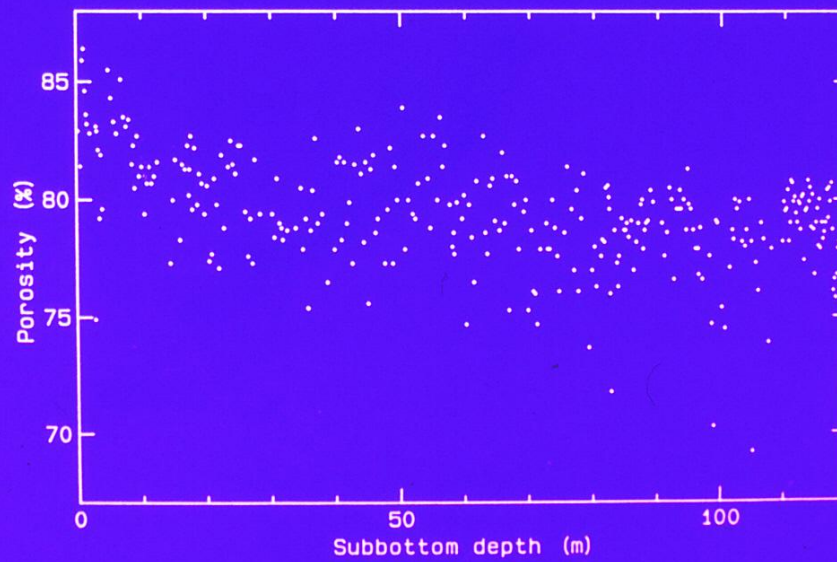
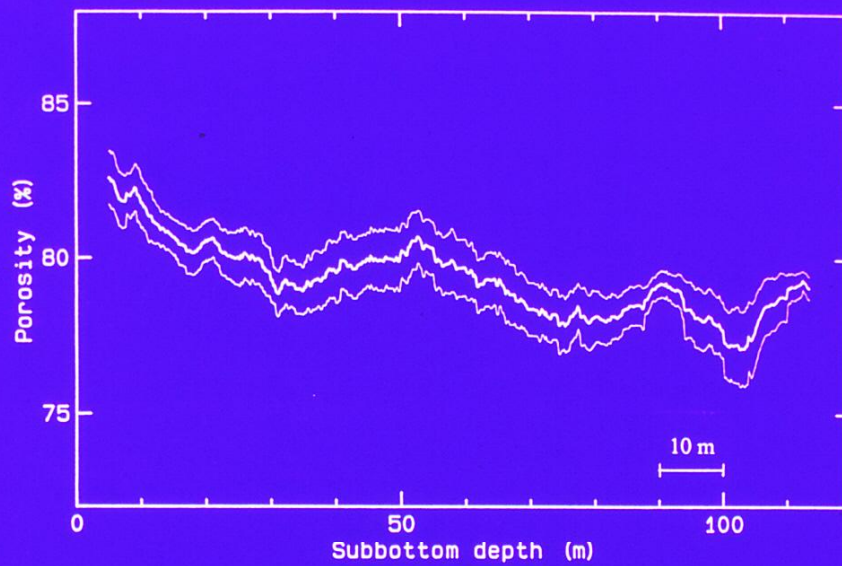
DSDP Site 578 - Inclination



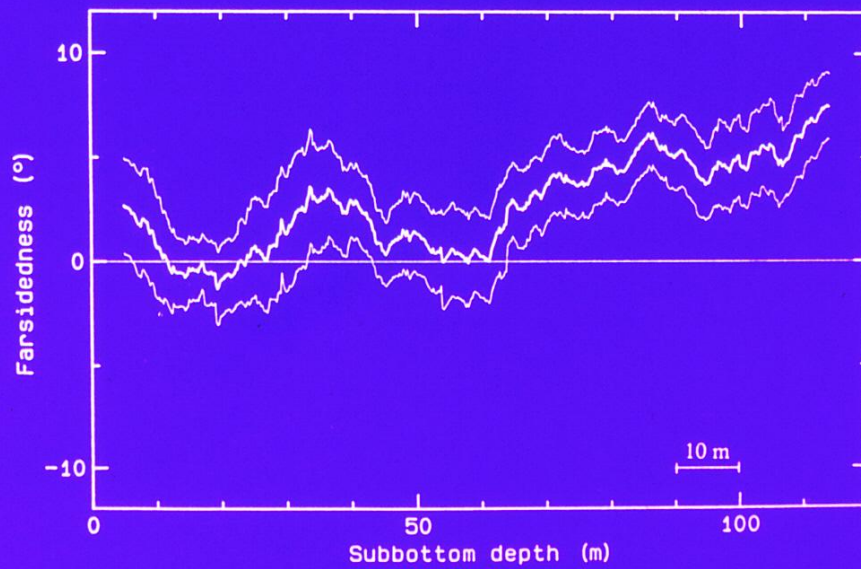
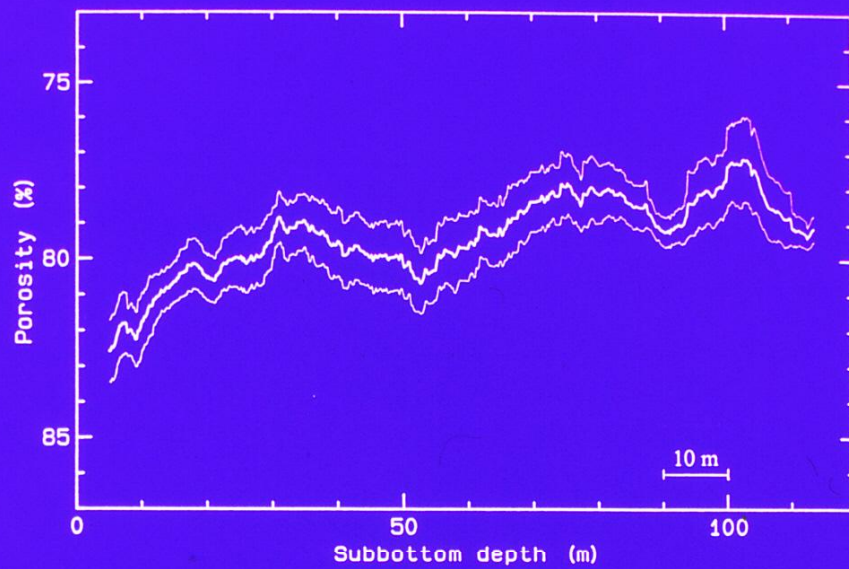
DSDP Site 578 - Farsidedness



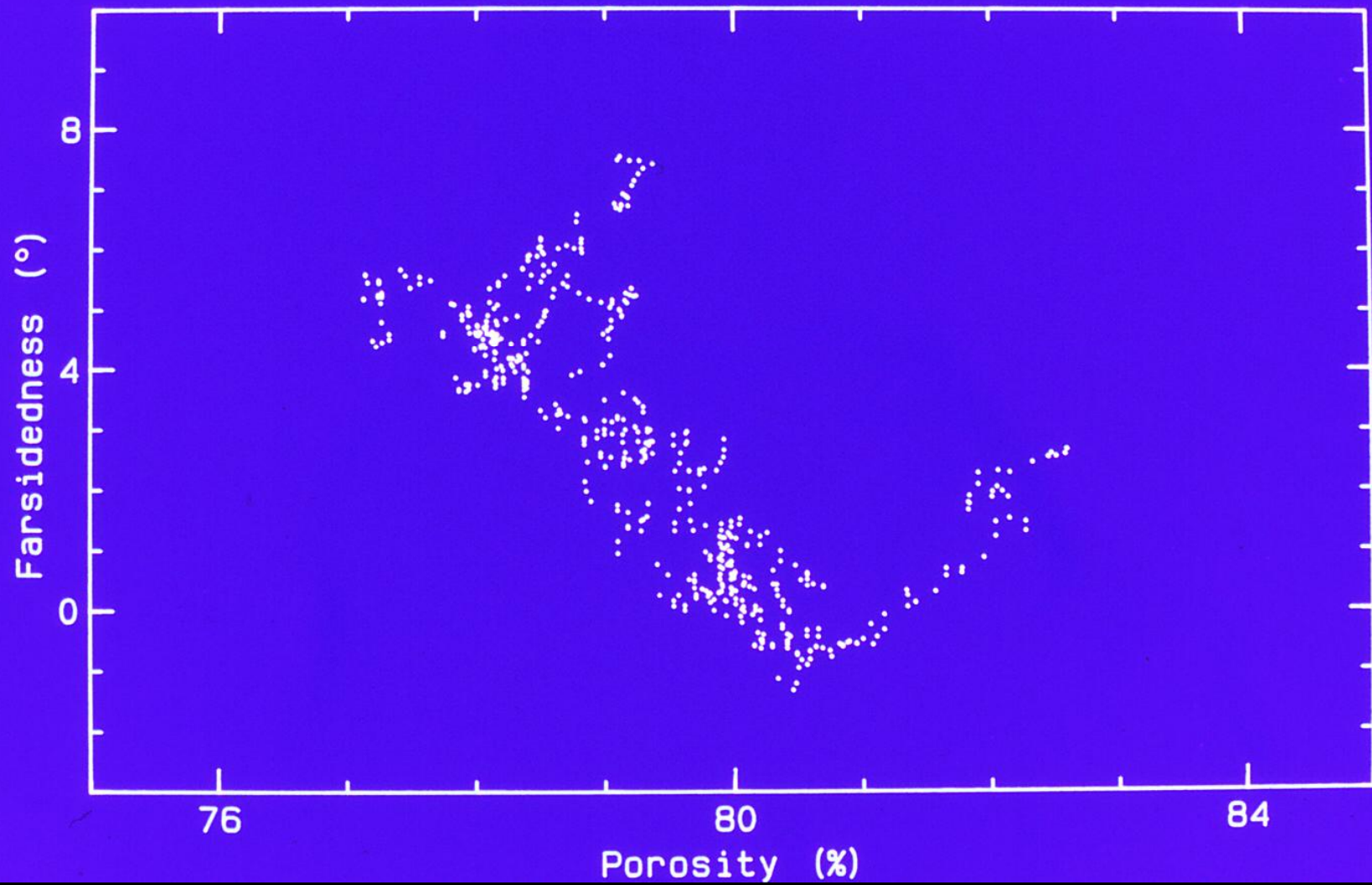
DSDP Site 578 - Porosity



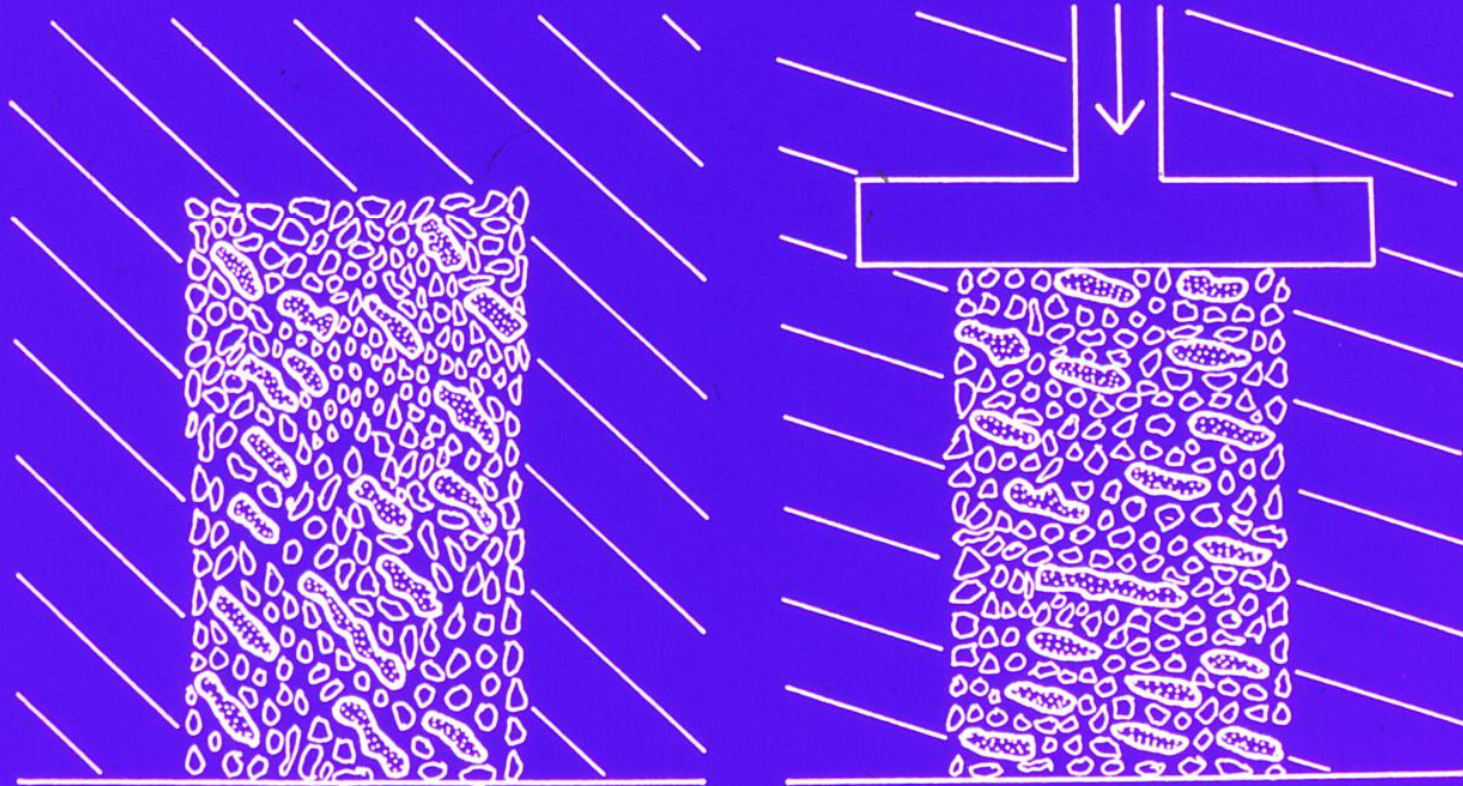
DSDP Site 578



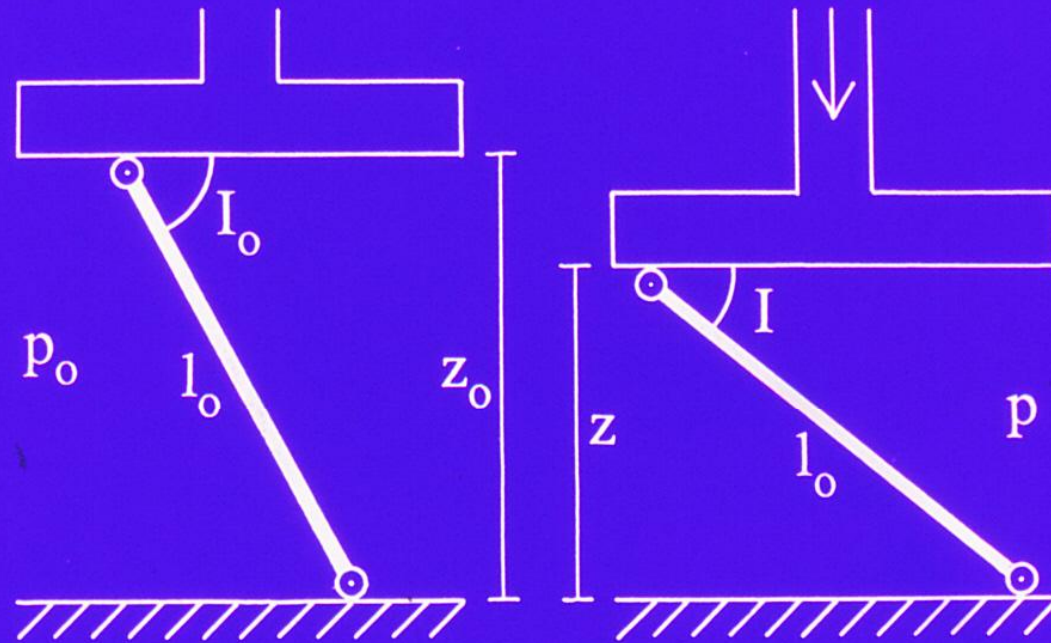
DSDP Site 578



Mechanism for inclination shallowing : Dewatering and gravitational compression of the sediment



Model for inclination shallowing by dewatering



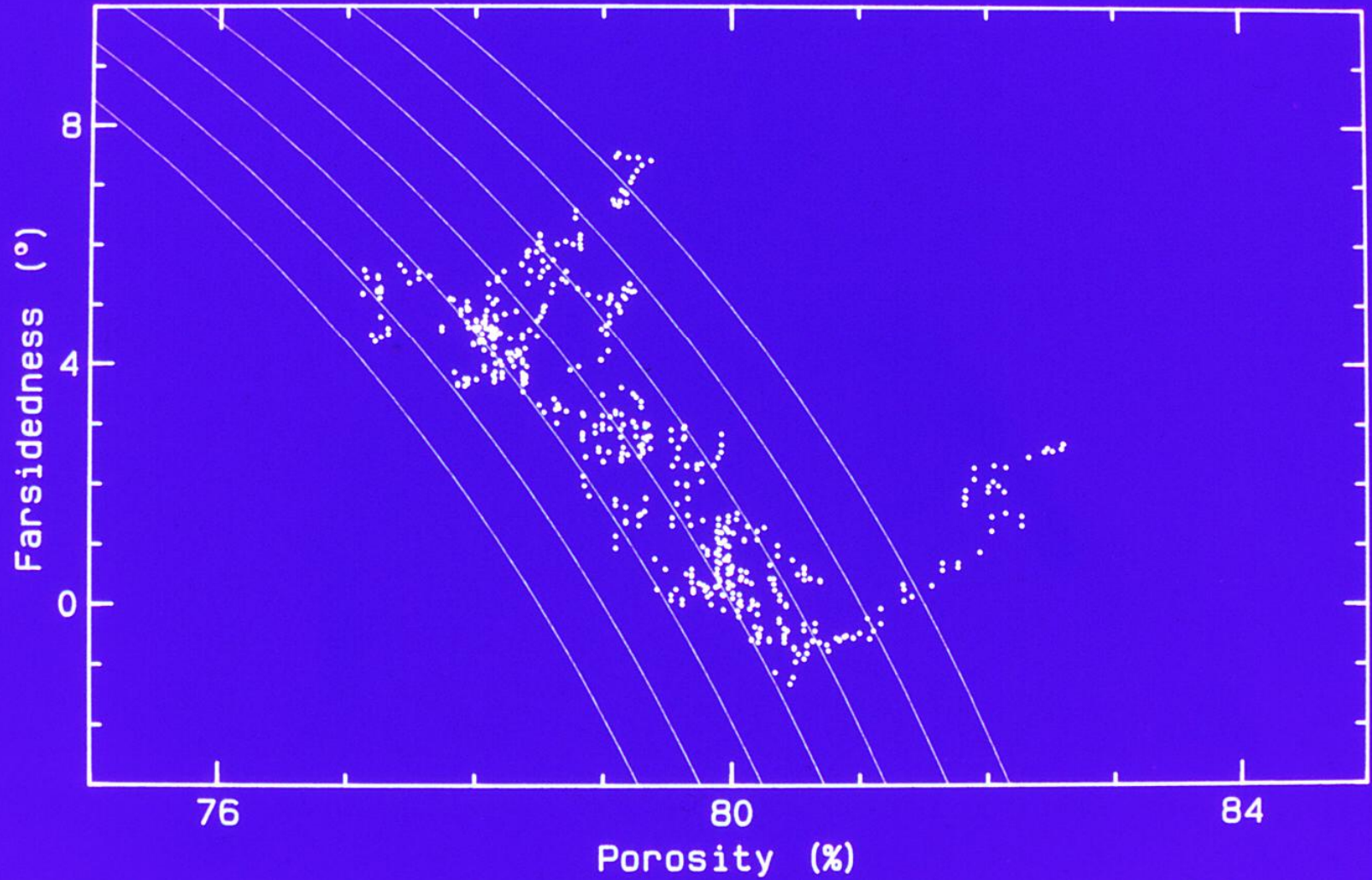
$$z_0 \equiv 1$$

$$l_0 = z_0 / \sin I_0$$

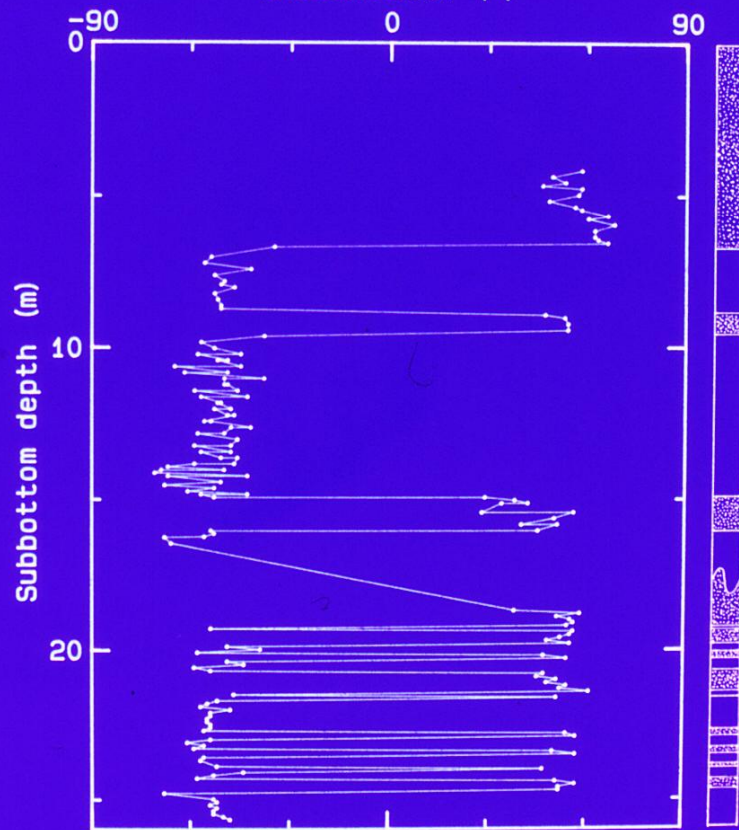
$$I = \arcsin (z / l_0)$$

$$p/100 = (p_0/100 - \Delta z/z_0) / (1 - \Delta z/z_0)$$

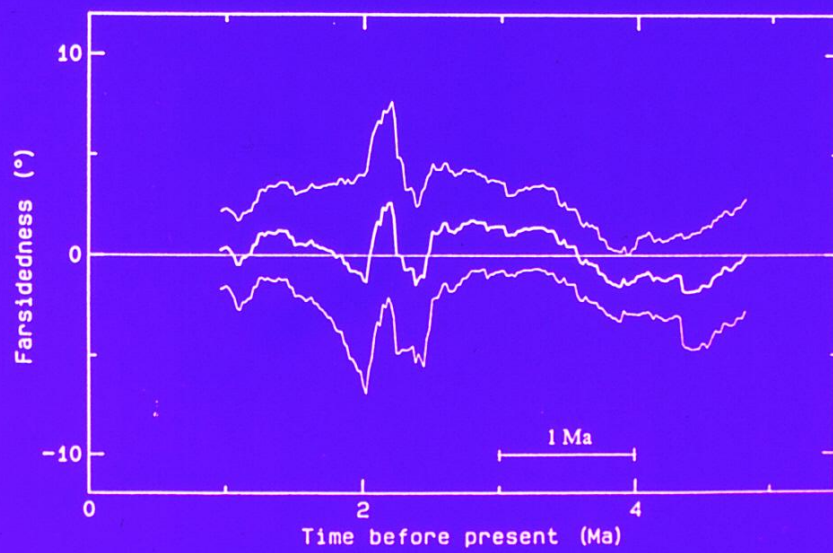
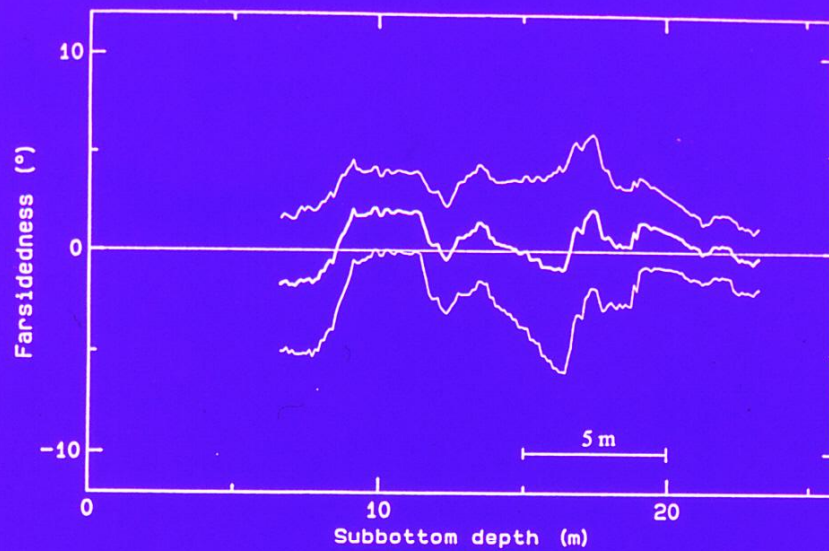
DSDP Site 578



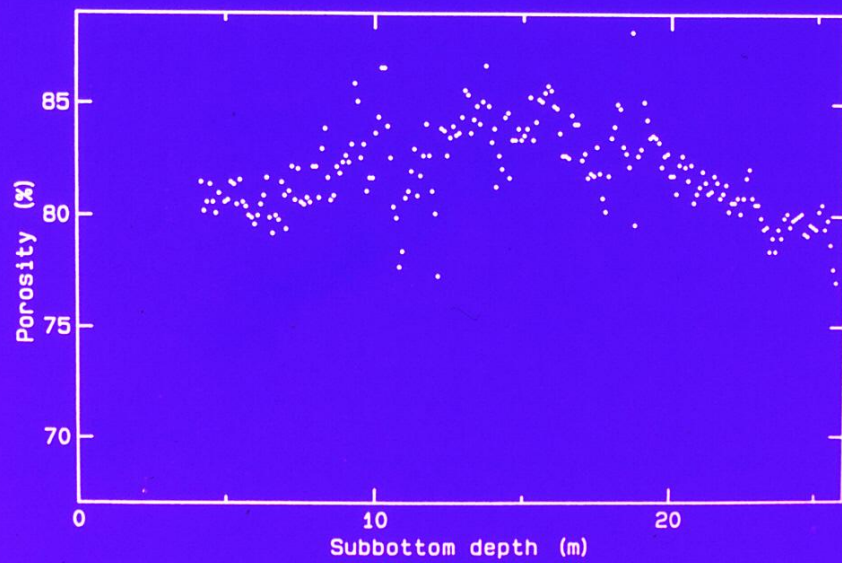
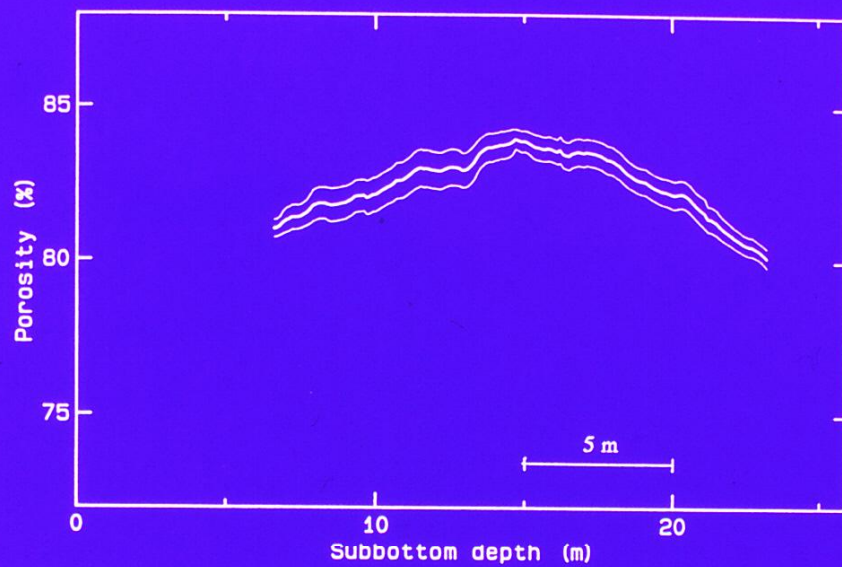
DSDP Site 576 - Inclination



DSDP Site 576 - Farsidedness



DSDP Site 576 - Porosity



DSDP Site 576

